

# Allergy

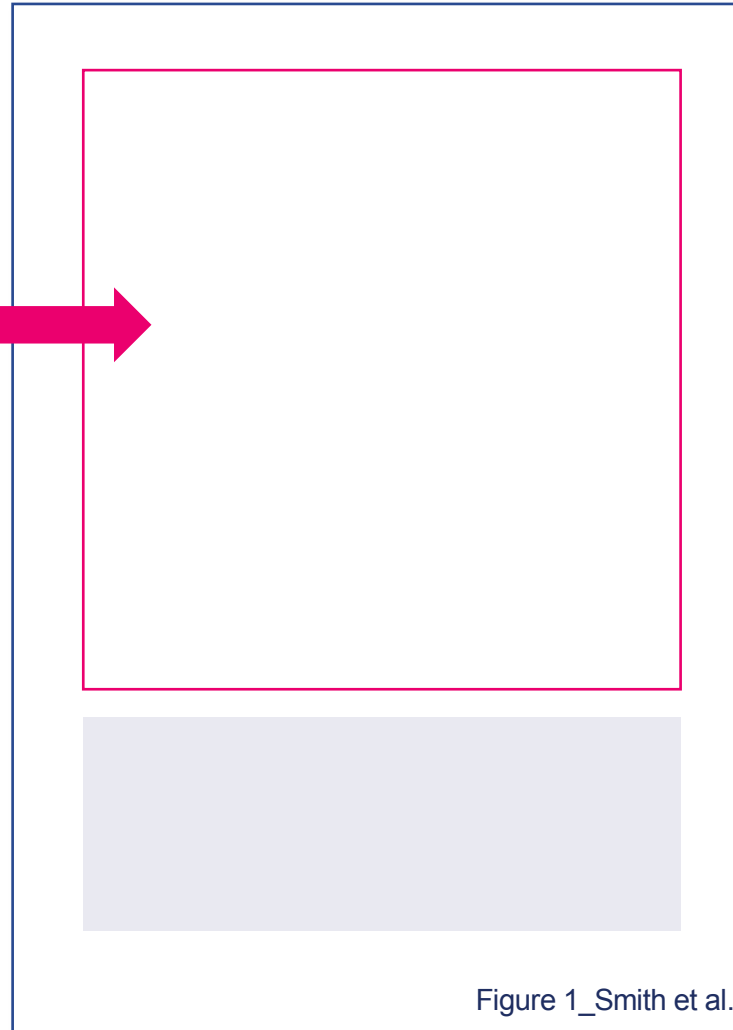


How to make good figures

# Begin with A4 page...



Fit all the display items within the rectangle



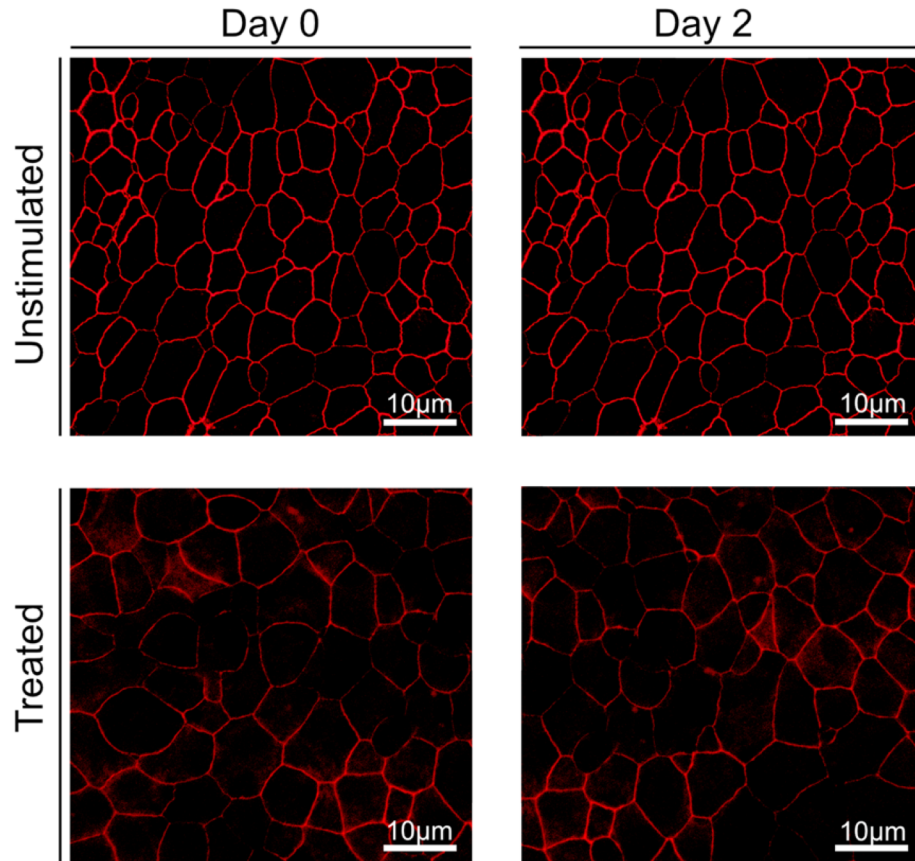
◀ Leave 15 mm margins

◀ Leave this space empty  
(the figure legend will be here)

◀ Label the figure

# Prepare display items

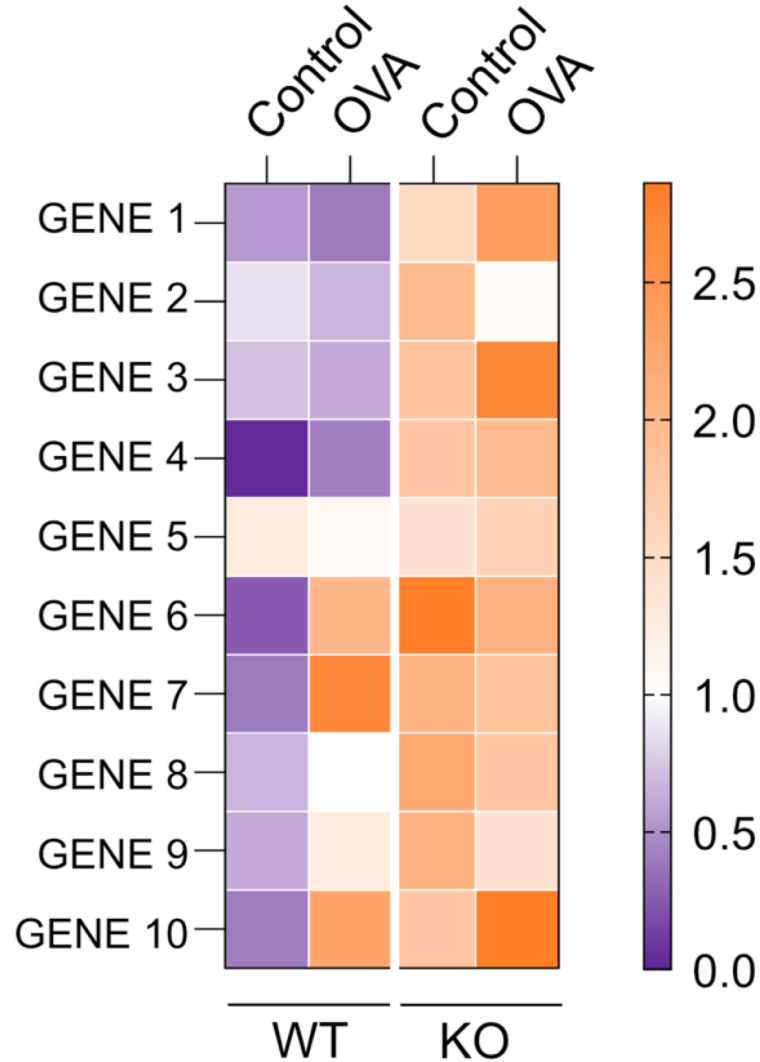
RESOLUTION



- ▶ Export display items at high resolution (600 dpi)
- ▶ Ensure that image remains sharp when enlarged to 200%

# Prepare display items

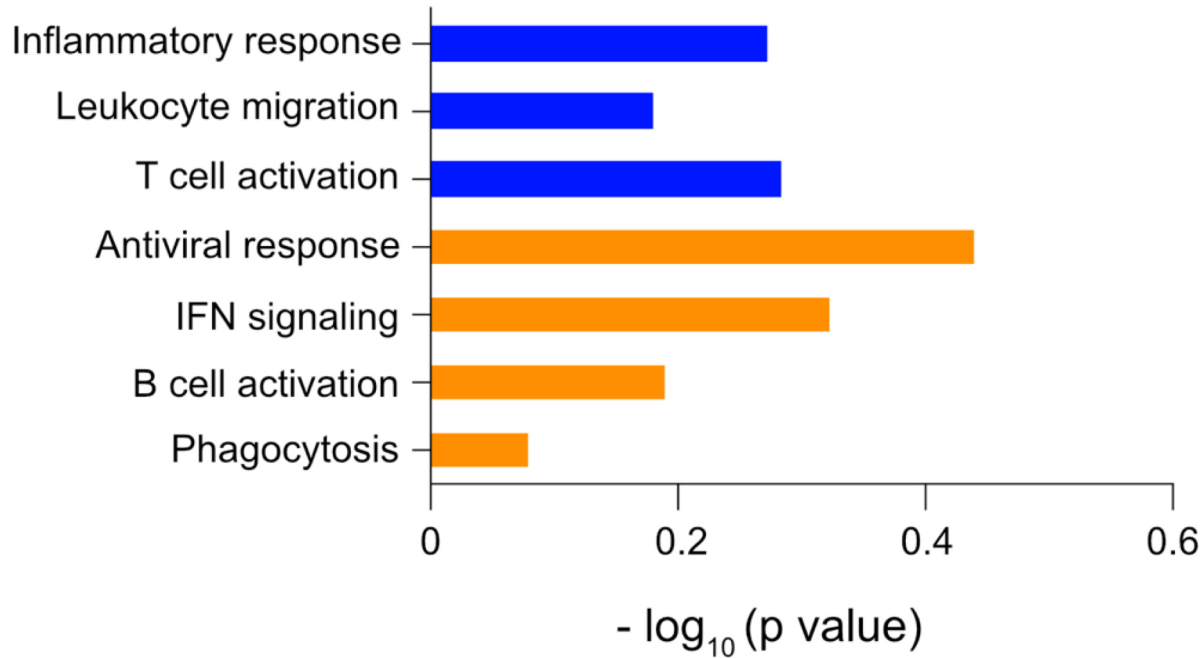
COLOUR



- ▶ Consider color blindness (avoid using red and green together)
- ▶ Use colors consistently (keep the same color-coding for all the figures)

To maximize the visibility of the data, **Allergy** has *lifted the fee for color figures*

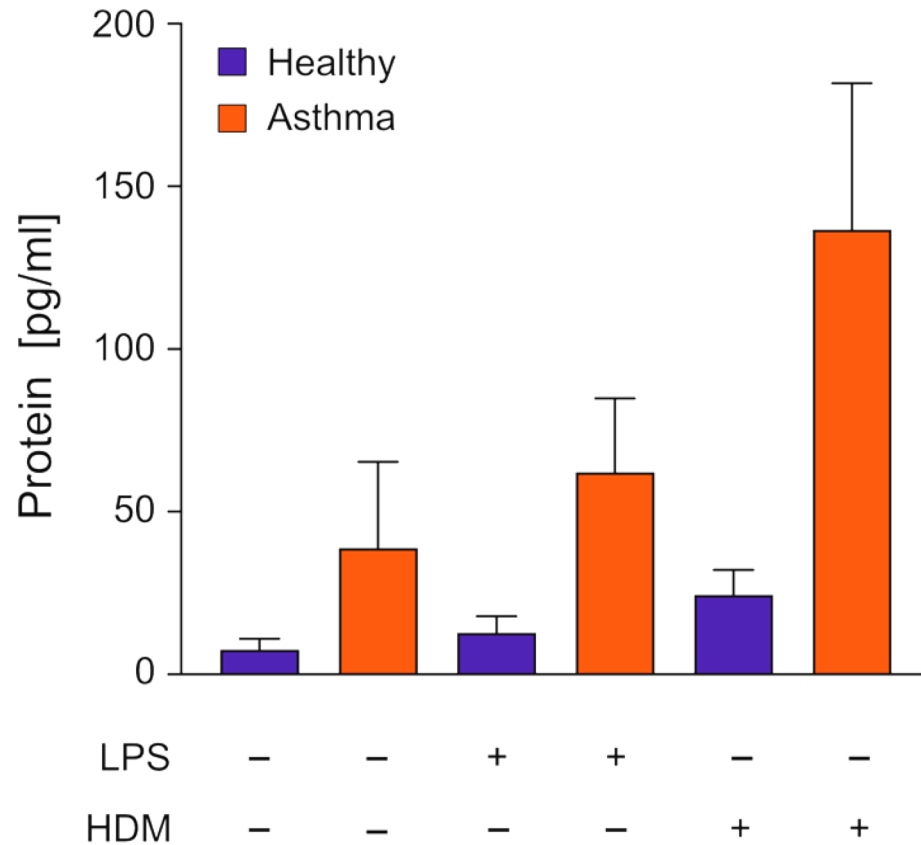
# Prepare display items



- ▶ Use only Arial or Helvetica
- ▶ Avoid bolding
- ▶ Avoid too many different font sizes
- ▶ Ensure sufficient contrast between text and its background
- ▶ Use font size proportional to the display item

# Prepare display items

FORMATTING



- ▶ Avoid thick axes and borders around the graphs
- ▶ Use consistent formatting for all display items
- ▶ Avoid 3D effects

# ..do the final check



Figure created on A4 page (vertical)

fully in color

visually appealing

created at the size suitable for printing

sharp when zoomed to 200%

readable when downsized to 75%

labeled at the bottom right corner

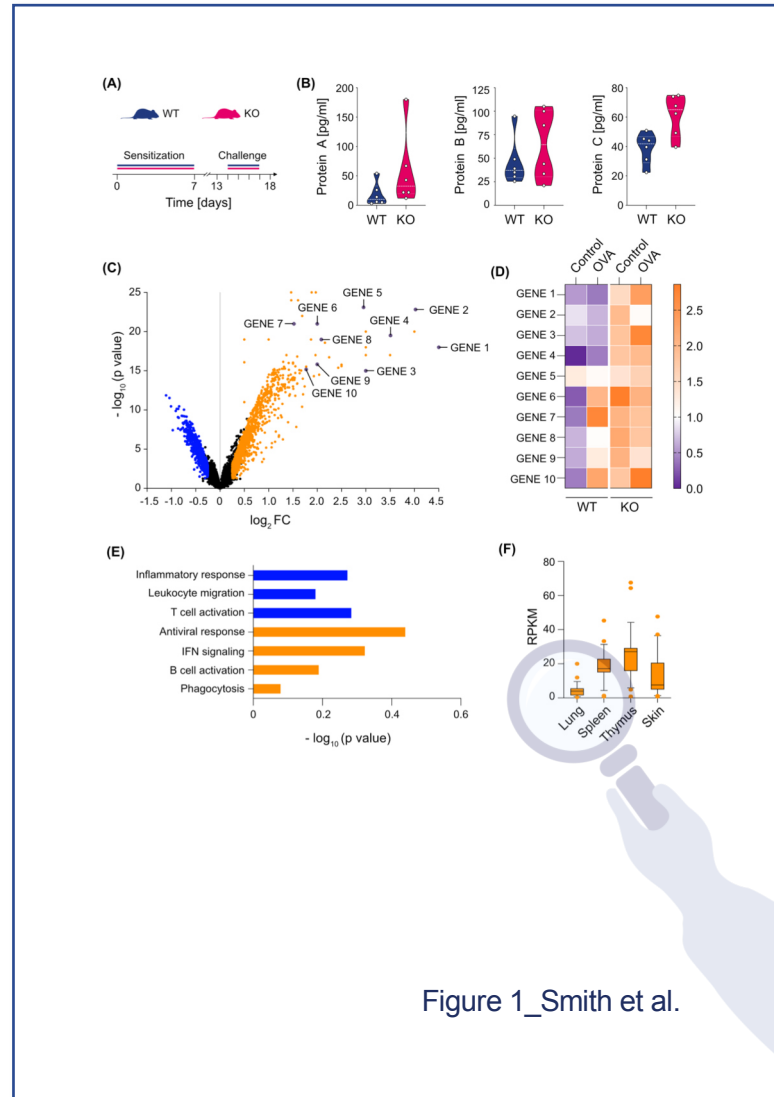


Figure 1\_Smith et al.

no dead space

no 3D effects

color-blind friendly

graphs aligned

font sizes standardized

