

Guidelines for Graphical Abstracts and Highlights

OVERVIEW

A Graphical Abstract (GA) is a stand-alone image summarizing the major findings of your Original Article in the form of a pictorial take-home message. It should be submitted together with three bullet points (Highlights) that summarize the main findings presented in the paper.

PURPOSE

GAs are designed to draw attention to the target audience, serving as a quick graphical summary of the research.

REQUIREMENTS

Graphical Abstract – image:

Please create your GA image in PowerPoint using the *Allergy GA Template* available [<here>](#) and graphics from the *Allergy Graphics Collection* [<here>](#)
You can simply copy and paste the relevant shapes to your GA.

Image ratio: 9 x 6 (width x height)

Resolution: minimum 300 dpi

Font: Arial, 60 - 72 pt when using the *Allergy GA template*

File format: JPG, PNG, TIFF, PDF

Highlights – text:

- **Include:** title of the manuscript, summary of the study in 3 bullet points, alphabetical list of abbreviations used in GA and their full forms
- **Word limit for bullet points:** 60 words in total
- **File format:** doc, docx

THE GRAPHICAL ABSTRACT IMAGE SHOULD

- be different from the figures included in the manuscript
- be easy to understand and well-structured
- be based on graphical elements
- focus on the main findings
- contain a minimal amount of text
- contain simple labels
- use the available space efficiently without leaving empty spots
- use the colours from the Allergy Colour Palette shown on page 7 of these guidelines
- effectively use accent colours to direct the attention to the point of interest
- correspond to the Highlights

THE GRAPHICAL ABSTRACT IMAGE SHOULD NOT

- contain a title
- include any microscope images, CT or X-rays scans, and so on
- contain light colours on a light background (e.g., yellow on white)
- contain highly-saturated colours
- include any graphics downloaded from online resources without obtaining copyrights
- have white, black or very dark background

SUBMISSION

*The Graphical Abstract image should be submitted together with Highlights **as separate files** in ScholarOne by selecting either “Graphical Abstract” or “Graphical Abstract Highlights” from the file designation list on:*

<https://mc.manuscriptcentral.com/allergy>

Files should be named as followed:

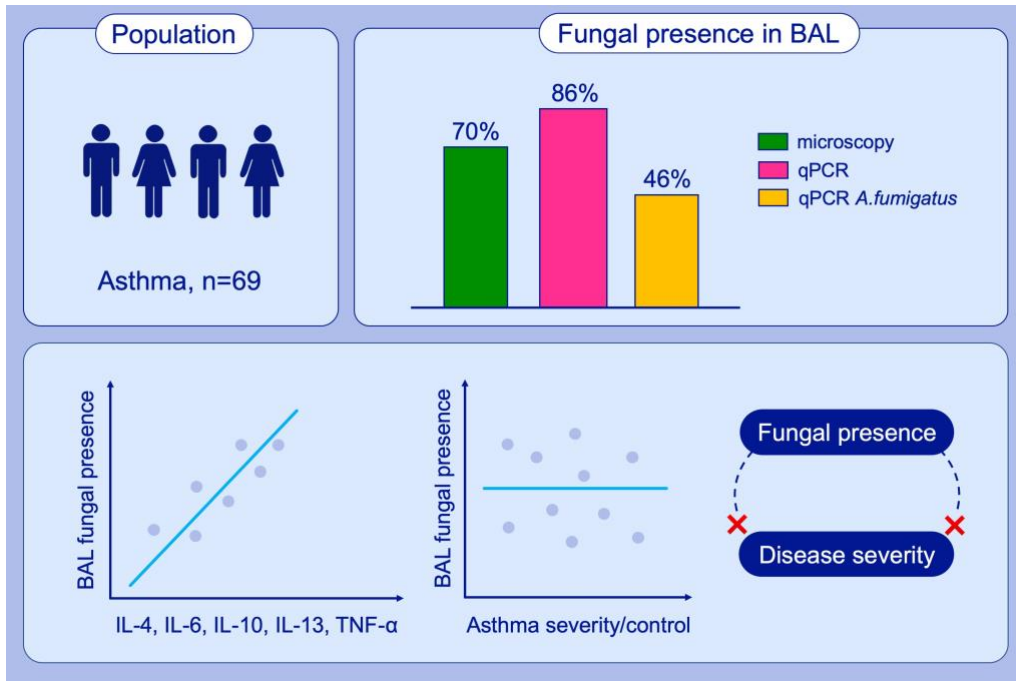
GA_ last name of the 1st author _ALL-xxxx_xxxxxx (saved as JPG, PNG, TIFF, PDF)

Highlights_ last name of the 1st author _ALL-xxxx_xxxxxx (saved as doc or docx)

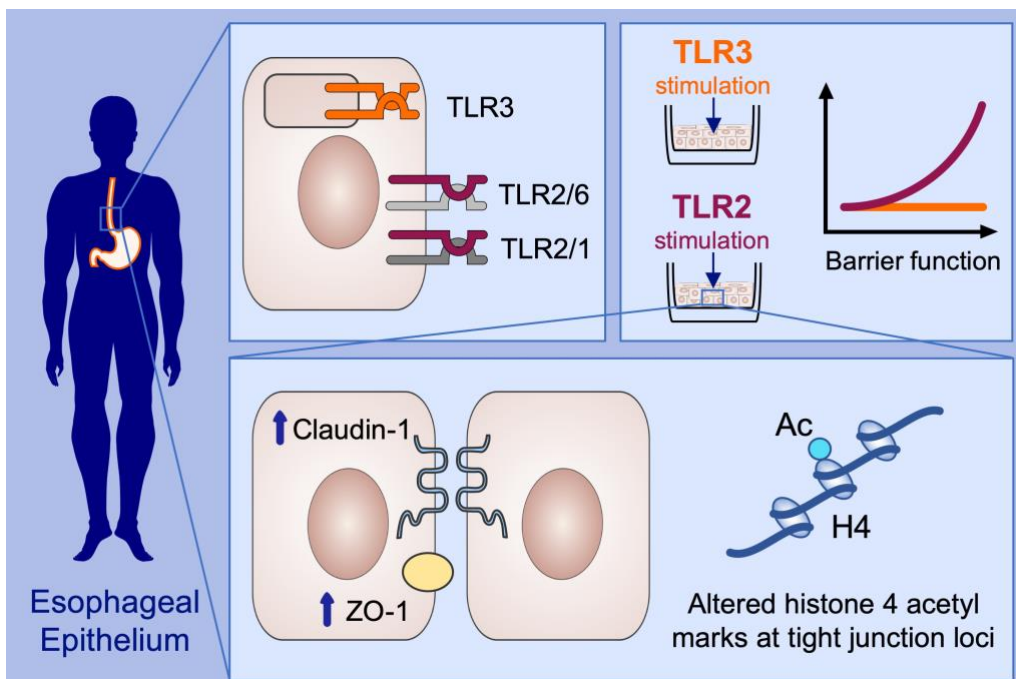
GRAPHICAL ABSTRACT EXAMPLES

Authors are encouraged to follow the examples of good Graphical Abstracts, prepared according to the guidelines, both in terms of visual aspect and conveyance of the article's take-home message.

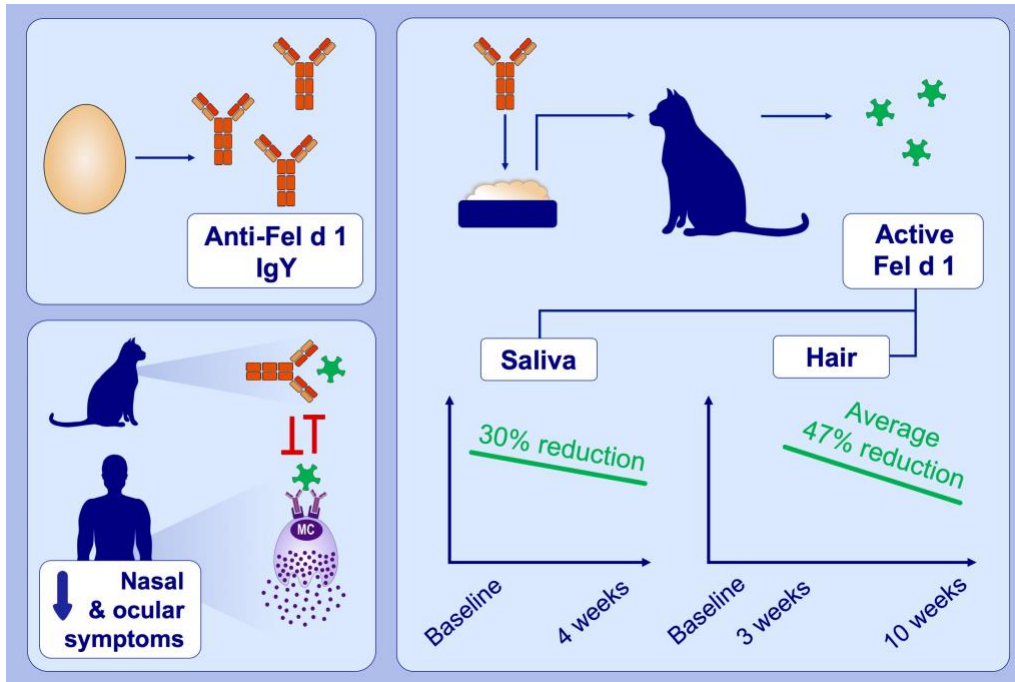
Example 1



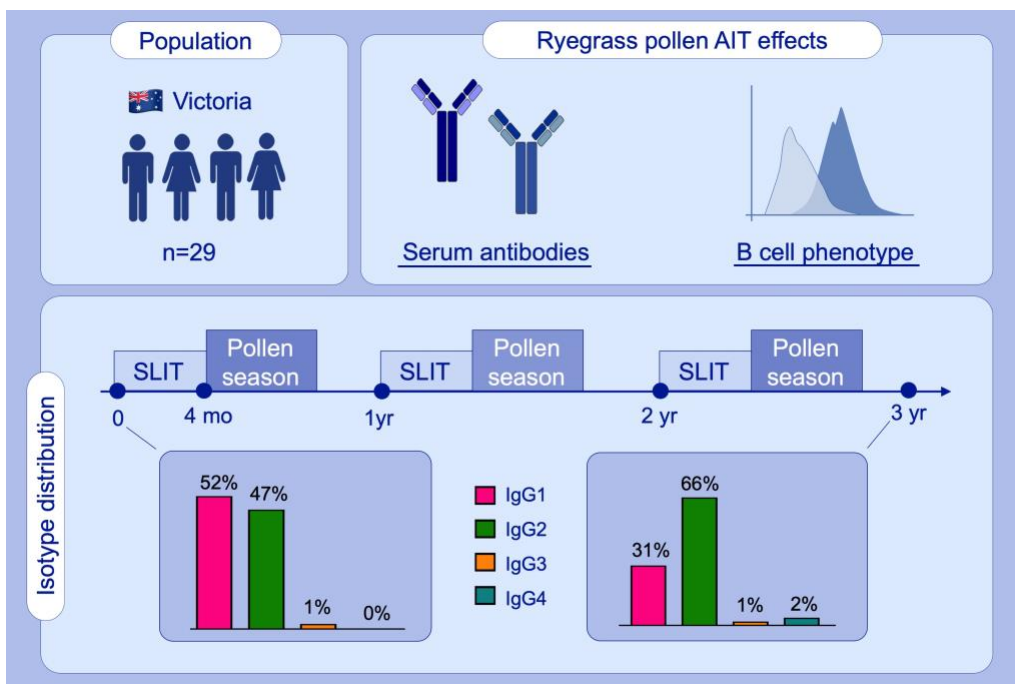
Example 2



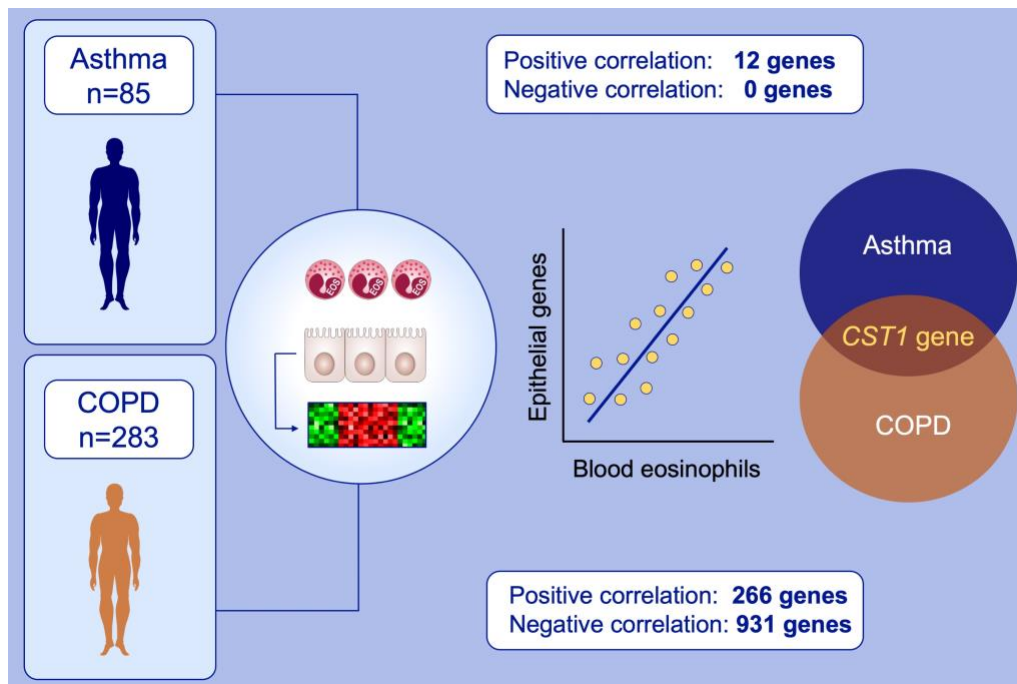
Example 3



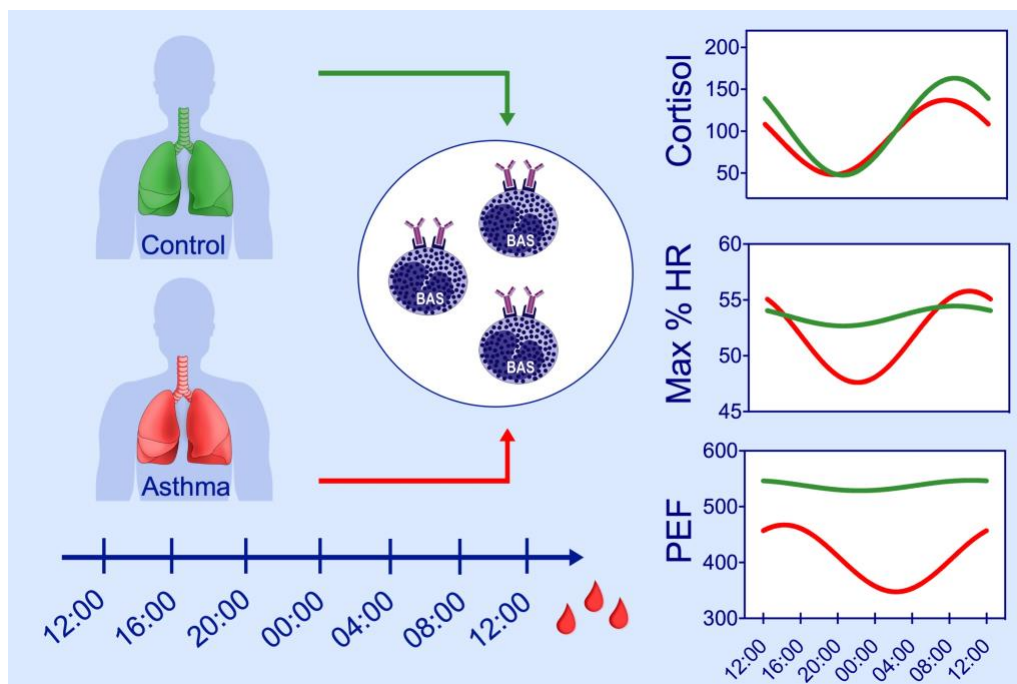
Example 4



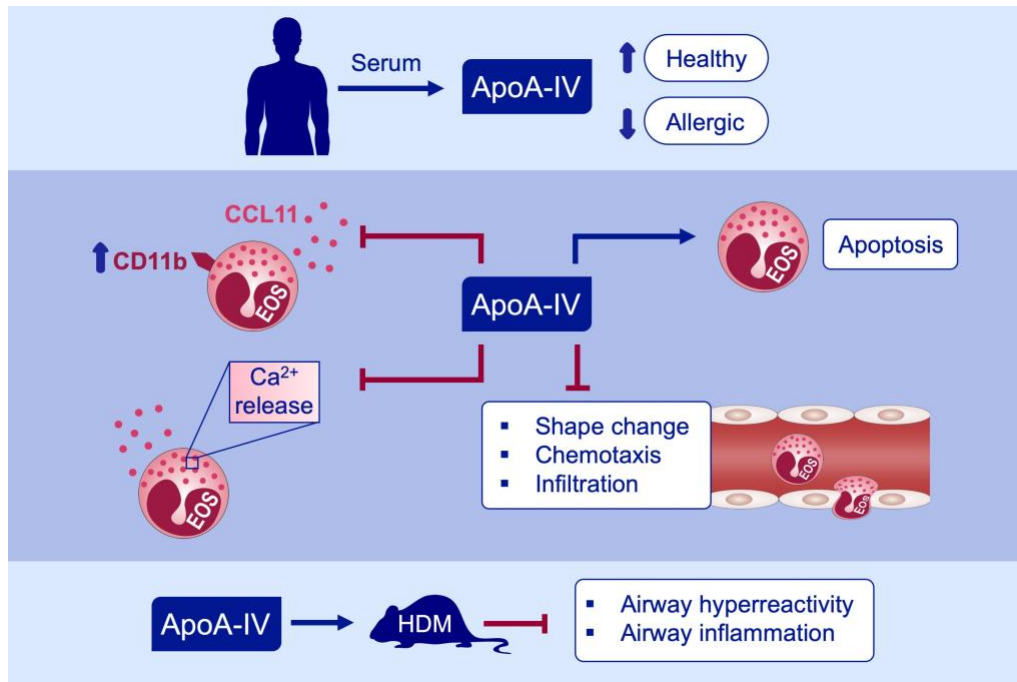
Example 5



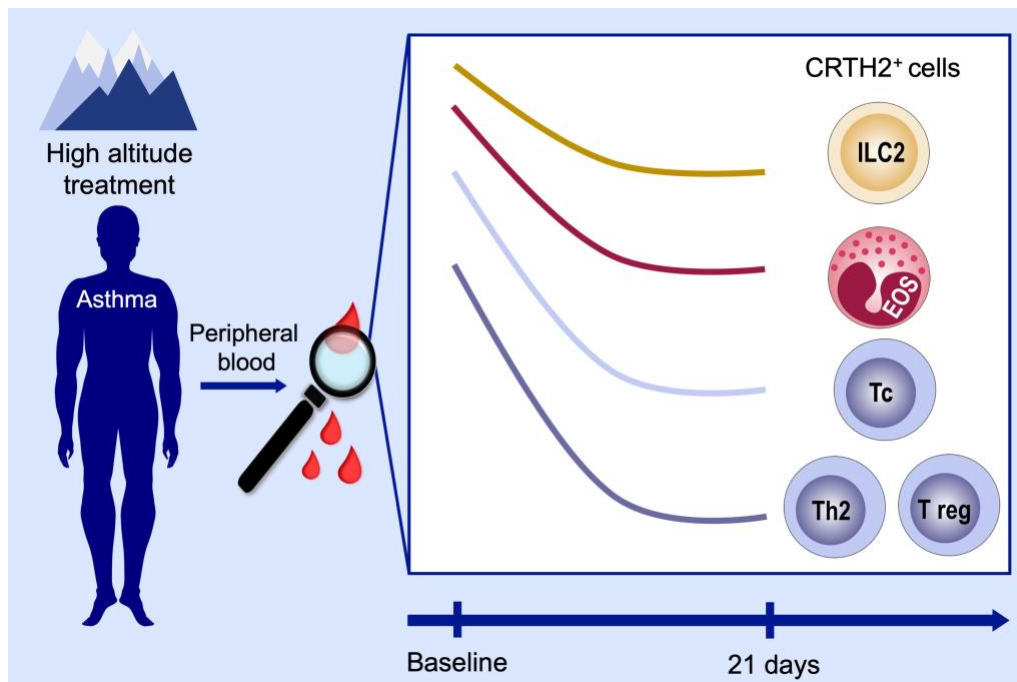
Example 6



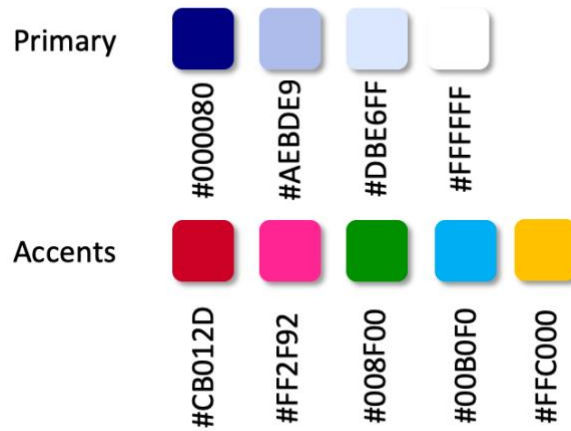
Example 7



Example 8



Allergy Colour Palette



Colour recommendations for GA images

Primary

#000080 (RGB: 0/0/128)

→ fonts, arrows, frames

#AEBDE9 (RGB: 174/189/233)

→ background darker

#DBE6FF (RGB: 219/230/255)

→ background lighter

#FFFFFF (RGB: 255/255/255)

→ textboxes

Accents

#CB012D (RGB: 203/1/45)

→ inhibition arrows

#FF2F92 (RGB: 255/47/146)

→ bar graphs, data points

#008F00 (RGB: 0/143/0)

→ bar graphs, data points

#00B0F0 (RGB: 0/176/246)

→ bar graphs, data points

#FFC000 (RGB: 255/192/0)

→ bar graphs, data points